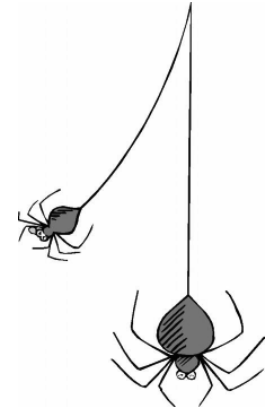


Spider Vocabulary

Arachnids

The class of animals spiders belong to; arachnids are animals that have an exoskeleton, a two-part segmented body, and eight jointed legs; they are cold-blooded and do not have a backbone.



Abdomen

A section of the spider's body that contains the guts, heart, silk glands, and reproductive glands.

Cephalothorax

A section of the spider's body that contains the legs, eyes, and mouthparts.

Pedicel

The spider's waist, which connects the cephalothorax and the abdomen

Pedipalps

Two sensory feelers that look like very short legs; also called palps.

Spinnerets

Where the spider's silk is located.